

JANUARY-MARCH 2026

GROWING TOGETHER: EARLY CONNECTIONS

A welcoming group where parents and young children build strong relationships, learn through play, and grow together during the early years.

WEDNESDAYS | 10:30-11:30 AM
COMMUNITY CHURCH OF EDWARDSBURG
28647 US-12, EDWARDSBURG, MI 49112

28

JAN, 2026

WINTER WELLNESS

Join us for hands-on activities to explore handwashing, preventive health, and supporting family well-being during the winter months.

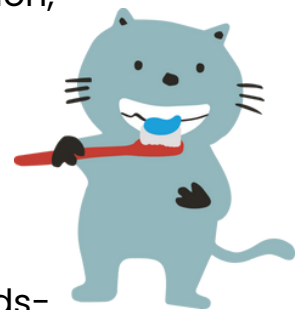


11

FEB, 2026

DENTAL HEALTH

Hands-on activities will help families build healthy routines, promote early prevention, and support confident care for young children's developing smiles.



25

FEB, 2026

MUSIC & MOVEMENT

Families will explore music through hands-on activities that encourage movement, curiosity, and connection.

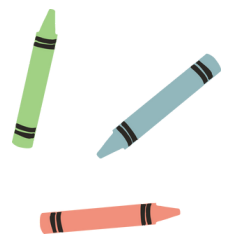


11

MARCH, 2026

PROCESS ART

Open-ended art activities invite children and caregivers to create, explore, and connect—focusing on the process rather than the product.



Presented by HSISD Early
Childhood Education
Questions? 269-635-0236

